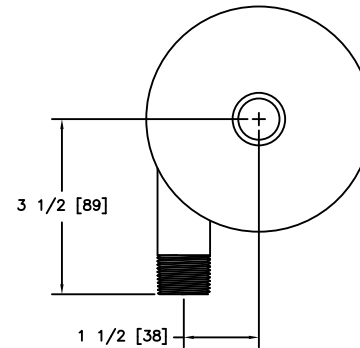
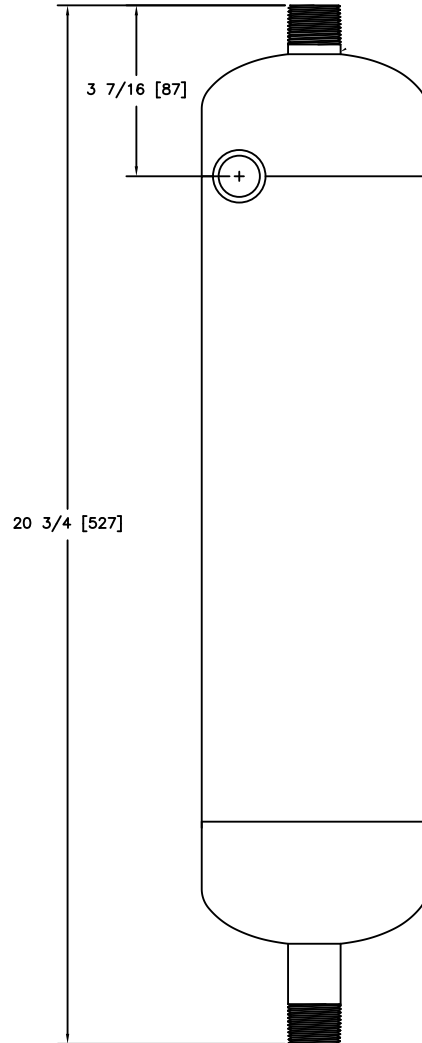


EXCEPT AS OTHERWISE PROVIDED BY CONTRACT, THIS DRAWING AND SPECIFICATIONS SHALL NOT BE REPRODUCED, COPIED OR USED AS THE BASIS FOR MANUFACTURE OR SALE OF MATTER DEPICTED HEREIN WITHOUT THE EXPRESSED WRITTEN PERMISSION OF THE CLAUDE LAVAL CORPORATION, OR ITS ASSIGNEES.

NOTES:

1. INLET & OUTLET ARE 3/4" MPT.
2. MAXIMUM PRESSURE: 125 psi. (8.5 BAR).
3. MAXIMUM TEMPERATURE: 100°F (38°C).
4. PRESSURE LOSS: 3-12.0 psid AT RATED FLOW.
5. RATED FLOW: 10-20 gpm (38-76 m<sup>3</sup>/hr).
6. APPROXIMATE DRY WEIGHT: 10 lbs. (4.53 kg.).
7. FINISH: POLISHED (EXTERIOR ONLY).



TOP VIEW

**SUBMITTAL DRAWING**

This drawing is submitted for special consideration only. Do not pre-plumb to these dimensions. Certified drawings available upon request.

REVISIONS				
ZONE	REV	DESCRIPTION	DATE	APPROVED

THIS DRAWING HAS BEEN GENERATED AND IS MAINTAINED BY A CAD SYSTEM. CHANGES SHALL ONLY BE INCORPORATED AS DIRECTED BY AN APPROVED ENGINEERING CHANGE ORDER (ECO). PAPER COPIES ARE UNCONTROLLED.

UNLESS OTHERWISE SPECIFIED, DIMENSIONS ARE IN INCHES (mm)	DESIGNED FOR	STANDARD		LAKOS		CLAUDE LAVAL CORP. 1385 N. CLOVIS AVE. FRESNO, CALIFORNIA 93727		LAVL CORPORATION SUNBELT	
FRONT VIEW: DECIMALS	APPROVALS	DATE	TITLE	SIZE	MODEL NO.	DWG NO.	114791		REV.
DO NOT SCALE DRAWING	DRAWN R. JONES	6/4/02	SMP-10, SEPARATOR	C					
SEE PARTS LIST	REVIEWED		3/4" NPT SANDMASTER, SS						
FINISH: POLISHED SS	CHKD β	6/5/02							
WORK ORDER	QTY.			SCALE 5/8			SHEET 1 OF 1		

114791