

4

3

2

1

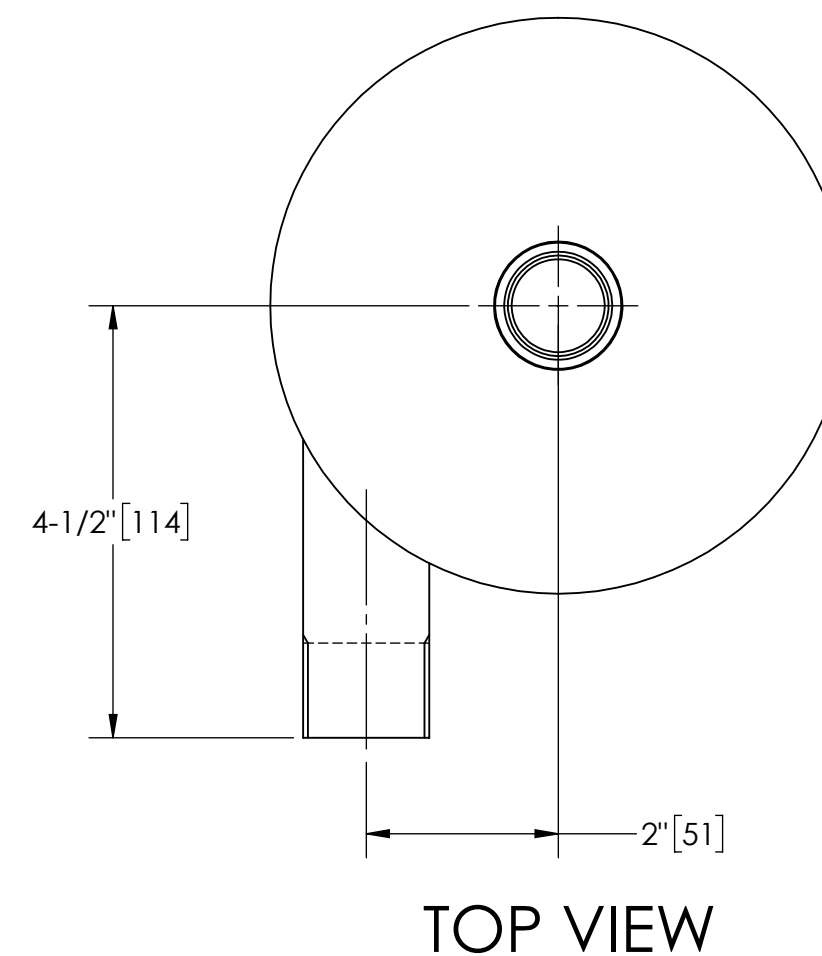
EXCEPT AS OTHERWISE PROVIDED BY CONTRACT, THIS DRAWING AND SPECIFICATIONS SHALL NOT BE REPRODUCED, COPIED OR USED AS THE BASIS FOR MANUFACTURE OR SALE OF MATTER DEPICTED HEREIN WITHOUT THE EXPRESSED WRITTEN PERMISSION OF THE LAKOS CORPORATION, OR ITS ASSIGNEES.

THIS DRAWING HAS BEEN GENERATED AND IS MAINTAINED BY A CAD SYSTEM. CHANGES SHALL ONLY BE INCORPORATED AS DIRECTED BY AN APPROVED ENGINEERING CHANGE ORDER (ECO). PAPER COPIES ARE UNCONTROLLED.

REVISIONS				
ECN	REV.	DESCRIPTION	DATE	APPROVED
	E	RELEASED FOR SUBMITTAL	7/24/20	AMF
	F	CHANGED INLET AND OUTLET TO PURCHASED PARTS	8/6/20	TPF
426	G	CHANGED BODY TUBING TO PURCHASED NOTCHED TUBING	3/30/21	TPF

NOTES:

1. INLET & OUTLET ARE 1" MNPT.
2. MAXIMUM PRESSURE: 100 psi (6.9 bar).
3. MAXIMUM TEMPERATURE: 120°F (49°C).
4. PRESSURE LOSS: 3-12 psid (.2-.8 bar) AT RATED FLOW.
5. RATED FLOW: 20-32 gpm (76-120 m³/hr).
6. APPROXIMATE DRY WEIGHT: 14 lbs (6.4 kg).
7. FINISH: POLISHED (EXTERIOR ONLY).



SUBMITTAL DRAWING

This drawing is submitted for spatial consideration only. Do not pre-plumb to these dimensions.

UNLESS OTHERWISE SPECIFIED: DIMENSIONS ARE IN: INCHES (mm) TOLERANCES ARE: FRACTIONS DECIMALS ANGLES ± 1/2" .XX ± .01 ± 1/4° .XXX ± .005 .XXXX ± .0005		ENGINEERED FOR: STANDARD		 FRESNO, CALIFORNIA WWW.LAKOS.COM	
DO NOT SCALE DRAWING		APPROVALS	DATE	TITLE	
MATERIAL: TYPE 304L STAINLESS STEEL		DRAWN: MQ	3/21/12	SMP-20, SEPARATOR 20-32 gpm, SS	
FINISH: POLISHED SS		ENGR: -	-	SIZE: C	MODEL NO.
		REVIEW: -	-	SCALE: 1:2	DWG NO. 114792
		WORK ORDER	QTY.		REV. G
				EST. WT. 14 lb	SHEET 1 OF 1

DWG NO. 114792
SHEET 11
REV. G