

Monitoring Well Manholes

A0721 Monitoring Well Manholes

All Emco Wheaton Monitoring Well Manholes incorporate cast-in identification triangles in accordance with API recommendations and meet AASHTO H20 wheel loading.

- Painted ductile iron lid and rim
- Optional galvanized steel or polyethylene skirt
- Bolt-down units have water-tight lids
- Custom skirt heights available
- Heavy Duty (16 gauge hot rolled carbon steel) skirts available. 100% welded skirt and seam. To order, replace the first digit of the variant number with a 2.



■ City of LA Approval BR800075
A0721-001ID, A0721-008CEID
A0721-101ID, A0721-108ID



Built-in side handle on 18" models - one hand opening and positioning



ID tag available on all models; large enough for all new regulatory requirements. To order, add "ID" to the end of the part number.

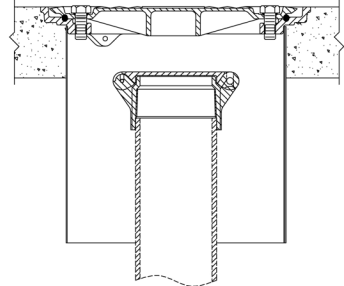
A0726-050ID ID Tag Kit
Includes tags and rivets for 50 units

A0720 Locking Cap & Collar

The Emco Wheaton A0720 locking cap and collar is used to limit access and seal monitoring wells and can be threaded or solvent welded onto a 4" PVC monitoring well pipe. It displays the monitoring well designation and includes a padlock. The cap and collar are both made of durable ABS plastic.

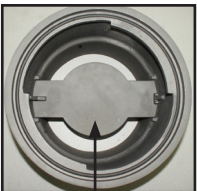
| Model No. | Description | Pipe Size | Lbs. |
|-----------|------------------------|-----------|------|
| A0720-001 | Locking Cap and Collar | 4" | 1.3 |

Replacement Parts
564029 Lock/Key Set A0720



A0721-112 12" Locking Monitoring Well Manhole

- Corrosion-free - all components are hard coat anodized aluminum
- Lockable, for added security
- Heavy-duty, reinforced lid with water-tight seal
- Meets AASHTO H20 wheel loading
- T-handle available, p/n A0081-112
- Weighs 25.7 lbs.



Locking Plate



Monitoring Well Manholes

A0721 Monitoring Well Manholes

| Size | Model No. | Style | Skirt Type | Lid Color | Overall Height | Clear Hole ID | Max. Dia. | Lbs. |
|--------|--------------------|-------------------|------------|-----------|----------------|---------------|-----------|------|
| 5" | * A0721-105 | Bolt-down | Steel | Black | 8.5" | 3.8" | 6.0" | 5.7 |
| | | | | | | | | |
| 6" | * A0721-106 | Bolt-down | Steel | Black | 7.5" | 4.5" | 6.7" | 6.3 |
| | A0721-106A | Bolt-down | Steel | Black | 9.5" | 4.5" | 6.7" | 6.4 |
| 8" | * A0721-008 | Bolt-down | Poly | Black | 12.3" | 6.0" | 9.9" | 11.7 |
| | A0721-008CE | BD, Large Bolts | Poly | White | 12.3" | 6.0" | 9.9" | 11.1 |
| | * A0721-108 | Bolt-down | Steel | Black | 12.7" | 6.0" | 9.9" | 13.7 |
| | A0721-108W | Bolt-down | Steel | White | 12.7" | 6.0" | 9.9" | 13.7 |
| | * A0721-188 | Bolt-down | Steel | Black | 9.2" | 6.0" | 9.9" | 12.8 |
| | * A0721-188L | Lay-in | Steel | Black | 8.9" | 7.8" | 9.9" | 11.9 |
| | *** A0721-208W**** | BD, Welded w/Lugs | HD Steel | Black | 12.5" | 6.0" | 9.9" | 12.7 |
| | A0721-308 | BD, 3 Bolts | Steel | White | 8.8" | 6.4" | 9.4" | 12.8 |
| | A0721-308A | BD, 3 Bolts | Steel | White | 12.8" | 6.4" | 9.4" | 13.7 |
| | ** A0722-008 | Bolt-down | Poly | Black | 12.3" | 6.0" | 9.9" | 12.4 |
| 12" | * A0721-001 | Bolt-down | Poly | White | 12.0" | 9.4" | 15.1" | 23.0 |
| | A0721-001CC | BD w/Rebar Tabs | Poly | White | 12.0" | 9.4" | 15.1" | 23.1 |
| | A0721-001L | Lay-in | Poly | Black | 12.0" | 11.2" | 13.8" | 22.8 |
| | * A0721-101 | Bolt-down | Steel | White | 12.0" | 9.4" | 15.1" | 28.8 |
| | A0721-101A | Bolt-down | Steel | White | 18.0" | 9.4" | 15.1" | 31.0 |
| | A0721-101L | Lay-in | Steel | Black | 12.0" | 11.2" | 13.8" | 28.6 |
| | A0721-119 | Bolt-down | Steel | White | 19.0" | 9.4" | 15.1" | 36.3 |
| | A0721-128 | Bolt-down | Poly | White | 8.1" | 9.4" | 15.1" | 21.9 |
| | A0721-128A | Bolt-down | Steel | White | 8.0" | 9.4" | 15.1" | 23.6 |
| | ** A0722-001 | Bolt-down | Poly | White | 12.0" | 9.4" | 15.1" | 24.3 |
| XXXXXX | 18" | * A0721-018 | Bolt-down | Steel | 12.3" | 13.8" | 18.4" | 58.5 |
| | | A0721-118 | Bolt-down | Steel | 18.0" | 13.8" | 18.4" | 69.5 |

* Most common variant
 ** Includes locking cap & collar

*** Heavy duty
 **** Compliant with Wisconsin Administrative Code, Groundwater Monitoring Well Requirements, NR141.13, Subsection 4b

Lid Replacement Parts

| Part No. | Lid | Description | Lbs. | Part No. | Lid | Description | Lbs. |
|----------|-----|---|------|----------|-----|-------------------------------|------|
| 569883 | 5" | Lid Ductile Bolt-down | 3.0 | 566419 | 8" | O-ring for 3/8" Bolt | |
| 569885 | 5" | Lid Gasket | | 566334 | 8" | O-ring for 5/8" Bolt | |
| 494263 | 5" | Bolt, 3/8" x 0.5" | | 568715 | 8" | Neoprene Washer for 3/8" Bolt | |
| 568692 | 6" | Lid Ductile Bolt-down | 2.4 | 569723 | 12" | Lid Ductile Lay-in | 11.6 |
| 568820 | 6" | Lid Gasket | | 563980 | 12" | Lid Ductile Bolt-down | 11.0 |
| 568662 | 6" | Bolt, 5/16" x 0.75" | | 563593 | 12" | Lid Gasket | |
| 571700 | 7" | Lid Ductile Bolt-down | 3.3 | 494262 | 12" | Bolt & O-ring, 5/8" x 1.75" | |
| 571702 | 7" | Lid Gasket | | 566334 | 12" | O-ring for 5/8" Bolt | |
| 494261 | 7" | Bolt & Neoprene Washer, 3/8" x 1" | | 567712 | 18" | Lid Ductile Bolt-down | 28.8 |
| 569285 | 8" | Lid Ductile Lay-in | 5.1 | 567995 | 18" | Lid Gasket | |
| 569106 | 8" | Lid Ductile Bolt-down | 5.1 | 494262 | 18" | Bolt & O-ring, 5/8" x 1.75" | |
| 567150 | 8" | Lid Ductile Bolt-down, A0721-008CE | 5.1 | 494375 | 18" | Bolt & O-ring, 3/8" x 2" | |
| 570767 | 8" | Lid Ductile Bolt-down, A0721-308 (3 bolt) | 5.1 | 566419 | 18" | O-ring for 3/8" Bolt | |
| 567146 | 8" | Lid Gasket | | 566334 | 18" | O-ring for 5/8" Bolt | |
| 494260 | 8" | Bolt & O-ring, 5/8" x 1", A0721-008CE | | 568715 | 18" | Neoprene Washer for 3/8" Bolt | |
| 494261 | 8" | Bolt & Neoprene Washer, 3/8" x 1" | | | | | |